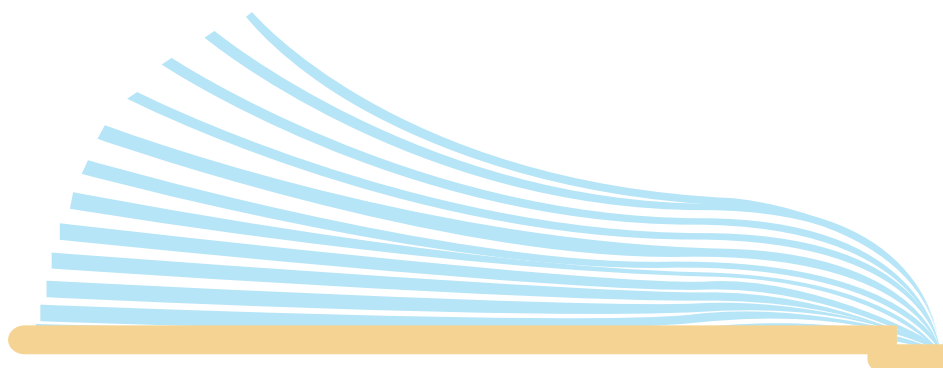


Discussion Notes

1. *School for Skylarks* includes several letters between Lyla and her parents. What do these letters bring to structure of the novel? How do they help to illustrate the relationships between Lyla, her mother and her father?
2. The Second World War is one of many plot devices within *School for Skylarks*. Despite Lyla being at Furlongs while this is taking place, how does the author bring in the events of the war alongside this?
3. Lyla and her mother have a complex relationship. How does her understanding of her mother's choices change as she matures? Do you think she makes the right choice not to meet her in Liverpool?
4. Why do you think Lyla refused to read her father's letters? How does her relationship with her father grow and change throughout the book?
5. What role does friendship play in *School for Skylarks*? How does Cat and Lyla's friendship help Lyla to grow through the novel? Do you think Cat is a good friend to Lyla?





6. When the Garden Hill School girls arrive at Furlongs, it is the first time Lyla has been in a school environment. How does the author show Lyla struggling to find her place with the other pupils? How does her relationship with Faye affect her place in the school?
7. Furlongs has quite a few animal inhabitants, including Violet, Gibson and Alfred. What roles do they play in the novel? What support do they offer characters throughout the story?
8. Great Aunt Ada is opinionated, educated and passionate. What effect does she have on the characters around her in the book? Explore her relationships with Lyla, Solomon and The Pinnacle in particular.

